

# **Introduction to Power BI**

**CA Rohan Mehta**

# Business Intelligence

- ❑ Business Intelligence (BI) is a process of analysing data through technology and presenting it to the end user(s) which help them to make an informed decision. With the use of historical and current data, a BI tool serves predictive view.
- ❑ Usually a BI tool can perform tasks like data connection, data mining, data transformation, data modelling through building relationships, complex calculations, report building, dashboard creation, online analytical processing and predictive analysis.



# Questions BI can answer

What happened ?

Why did it happen ?

What is happening ?

What will happen ?

What do I want to happen ?

# BI Tools

- **Microsoft Power BI**
- **Tableau**
- Sisense
- Looker
- Datapine
- Zoho Analytics
- Yellowfin
- Answer Dock
- Report Plus
- QlikView
- SAP BusinessObjects Lumira
- SAP Crystal Reports
- SAP Business Intelligence
- Vista
- Clotrack
- Hotjar

## Desktop

A desktop Application

## Service

An online SaaS

# Power BI

## Mobile App

For windows, IOS and Android device

## Report Server

To publish power BI report

# ETL



## Extract

The first step in using Data Warehousing is to extract data from single or multiple sources to load in its environment.



## Transform

The Data which has been extracted, may not come in the desired format or size etc, so there may be the need to transform the incoming data to meet business requirements and objects.



## Load

Once the data is being transformed, its ready to be loaded in targeted tables.

# Power BI Dashboards

Debtors Sales Table

Name	T Sales	% Sale	T. GP	GP %
Sun Pharmaceutical Industries Limited.	2383603	1	214881	9.01
Sun Pharmaceutical Industries Ltd	1258259	1	184265	14.64
SUN PHARMACEUTICAL INDUSTRIES LTD.	995779	1	117258	11.78
PRIYA ENTERPRISE(VAPI)	736000	1	145000	19.70
Chemtek Scientific Company.	630950	1	9478	1.50
Arieschem	326368	1	40766	12.49
Netafim Irrigation India Pvt. Ltd	273000	1	106600	39.05
Chemtek Scientific Private Limited - Debtor	264782	1	12916	4.88
Vadodara Gramya Jilla Police Credit &	177300	1	60550	34.15
<b>Total</b>	<b>8200094</b>	<b>1</b>	<b>1013197</b>	<b>12.36</b>

**8200094**

T Sales

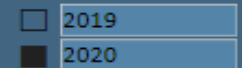
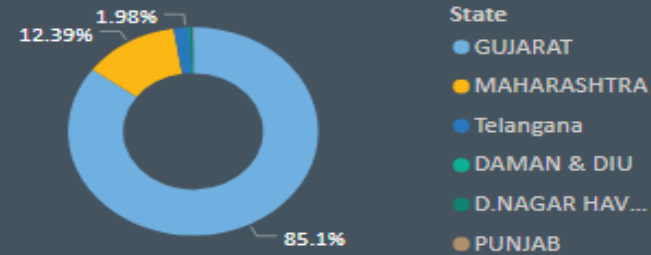
**71,86,890**

COGS

**12.36**

GP %

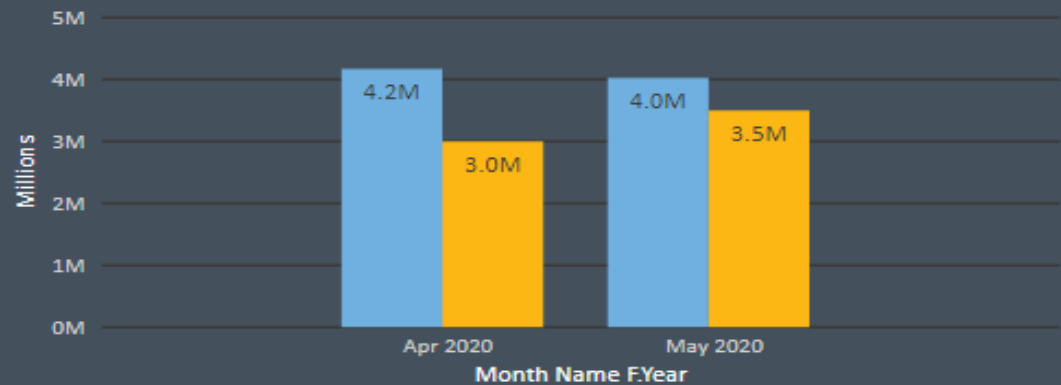
Statewise Sales Table



Product sale Table

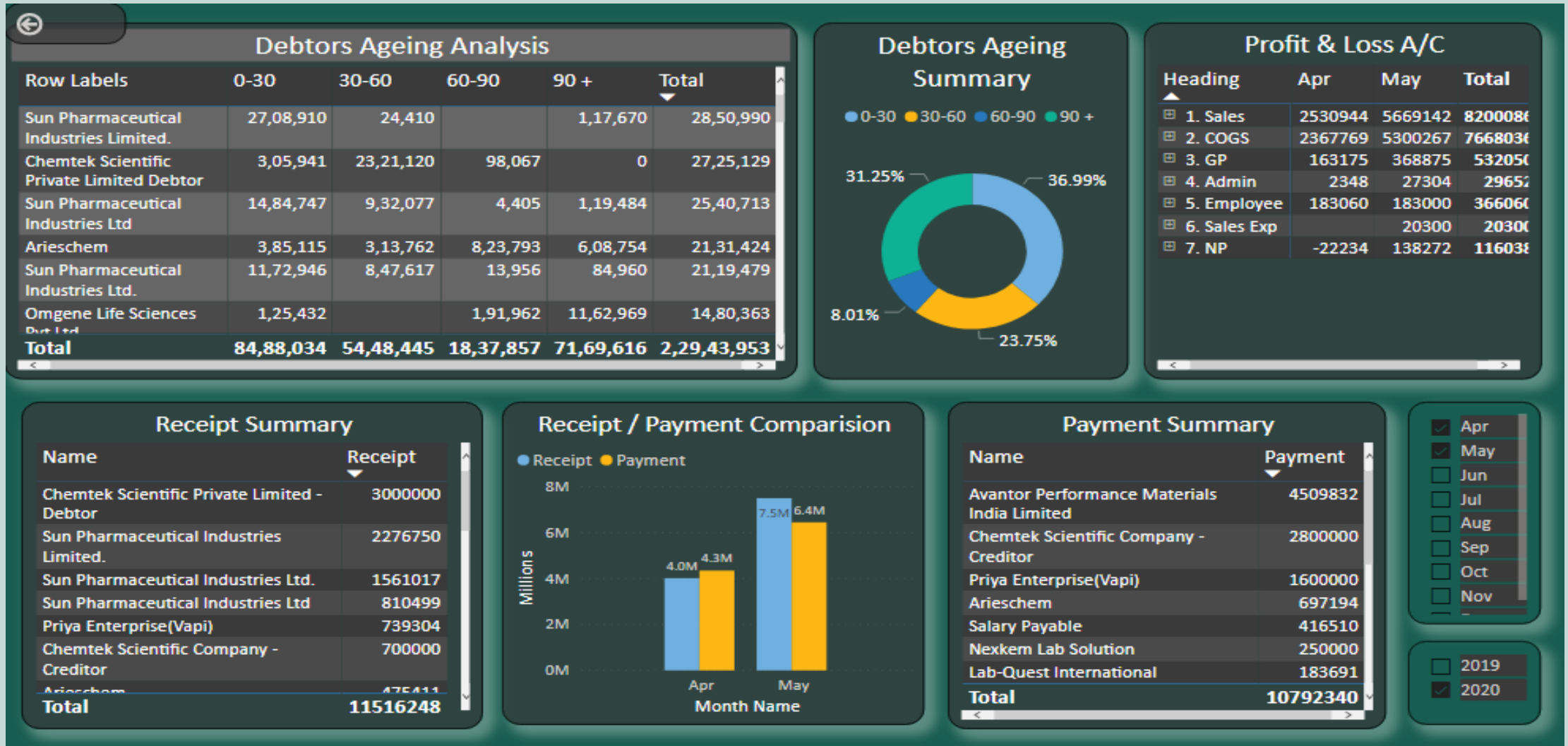
Product Name	T Sales	% Sale	GP	GP %
CLEAR GLASS VIAL	42000	1	-68,501	-163.10
RUTHENIUM(IV) OXIDE, ANHYDROUS, 99.9%	9262	1	-2,316	-25.01
Sodium Lauryl Sulfate	46000	1	-5,000	-10.87
BATHOCUPROIN, 98% 5G	18099	1	-1,694	-9.36
Propylparaben	5315	1	-370	-6.96
METHANOL	204450	1	-14,100	-6.90
Corning® 1 x 8 Stripwell™ 96 well EIA pl	88550	1	-2,620	-2.96
Mo-13.4-Digital-E-Fluorescence-Plate	85856	1	0	0.00
<b>Total</b>	<b>8200094</b>	<b>1</b>	<b>10,13,197</b>	<b>12.36</b>

Month wise Sales Table

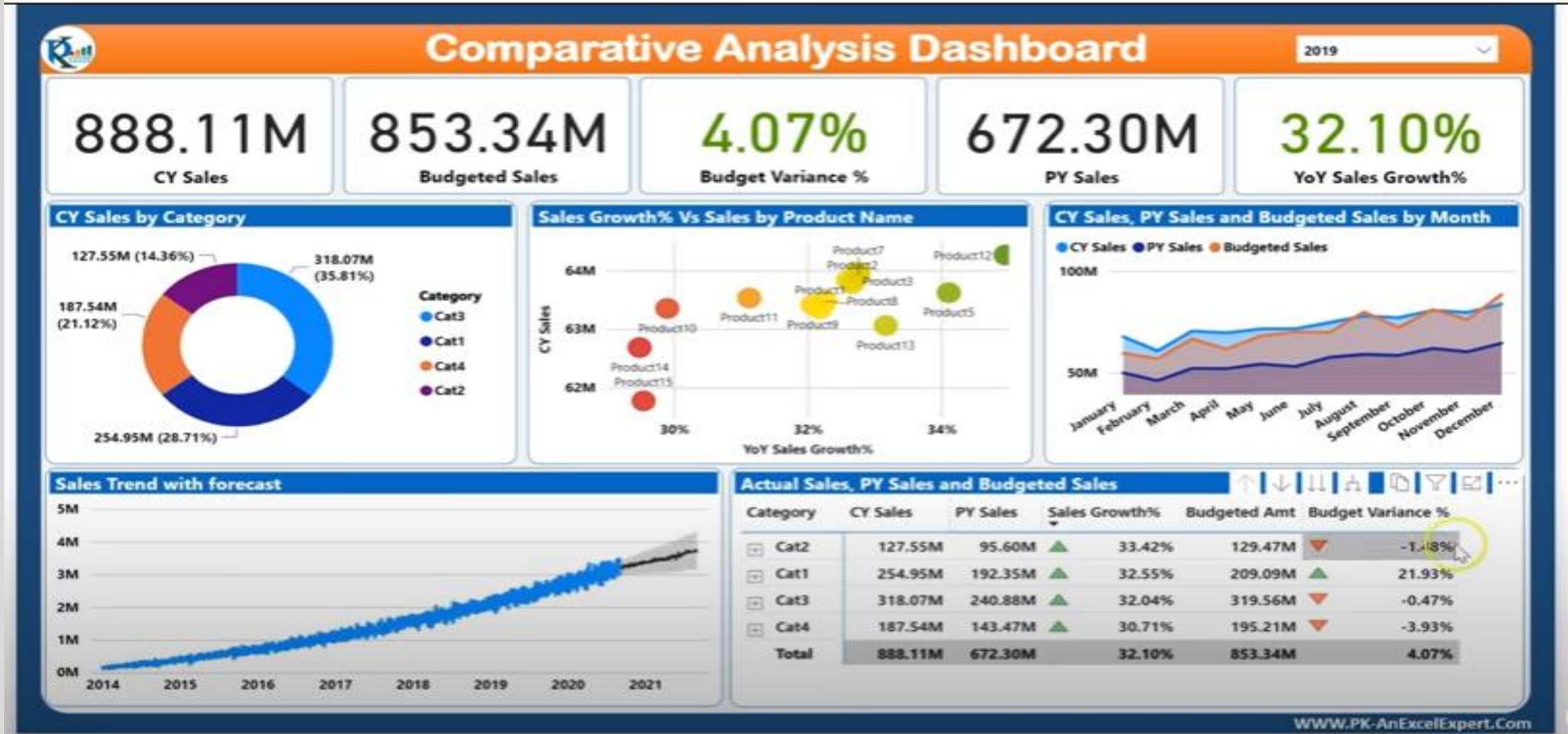




# Power BI Dashboards (Cont.)



# Application of Power BI



# Prerequisites for Power BI

- There is no basic requisite for learning Power BI except for some basic knowledge MS Excel.
- Knowledge Pivot Table , Look Up Function, Function like sum, average, Count, Use of Filters formatting will be helpful to learn it faster.
- Knowledge of power query will be great help in cleaning and processing the data.

# Why Choose Power BI over Excel

- Store and analyze huge amount of data smoothly: With powerful compression algorithms to import and cache the data within the .PBIX file, it can easily handle huge data bases. On the other hand Excel struggles even in opening an file having few hundred thousands of rows.
- Find Data insights and show trends in minutes: With build-in time intelligence functions, it becomes very easy to dig into vast amount of data and draw trend (unlike Excel).
- User Friendly Report Interface: Its just about drag and drop of the fields when it comes create impressive visualizations. Even a complex report with diverse visualizations won't take more then 10 to 20 mins to create. If you think that pre-enabled visualizations are not enough then you can import a custom visualization anytime in just few clicks from the library of 100's of custom visuals.

# Why Choose Power BI over Excel (cont.)

- Publishing and Sharing the Report: Just by hitting the publish button, one can publish the report on Power BI service and whosoever has an access to it can view the updated report or dashboard always. On the other hand in Excel, one need to send emails or putting in the share drive or share point and telling them that we have updated the file.
- Defining Roles: Power BI gives us an option to define roles to make sure people from different departments or locations can see only their respective data (Which can't be done in Excel).

# What will be covered in Power BI Course

- How to download Power BI
- Understanding of various Versions of Power BI
- How to Import, transform and load data into Power BI
- How to build connection between various data
- How to build multiple dashboards using various visuals and graphs.
- How to play with your dashboards to give detailed information
- How to publish and share your reports

# QUESTIONS



# THANK YOU

Contact us

Email – [rohanmehta\\_rma@yahoo.in](mailto:rohanmehta_rma@yahoo.in)

M – 96199 34745